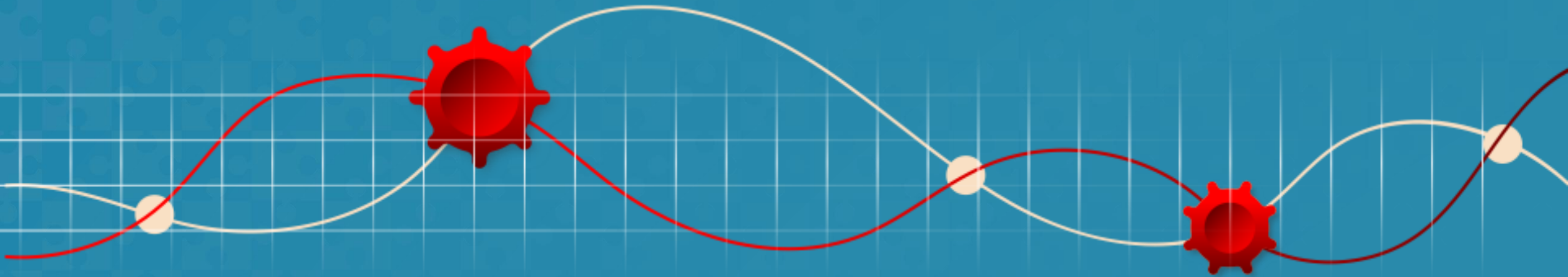


Politics, Pandemic, Polls, and Predictions



Presented by Tory Van Voorhis
second avenue

Second Avenue Learning

- Founded by educators and gamers in 2006.
- To improve educational outcomes through innovative, creative use of digital technologies, paired with thoughtful learning design.
- By delivering visionary products, consistently noted for both smart design and proven efficacy.



GAMES+
LEARNING+
SOCIETY



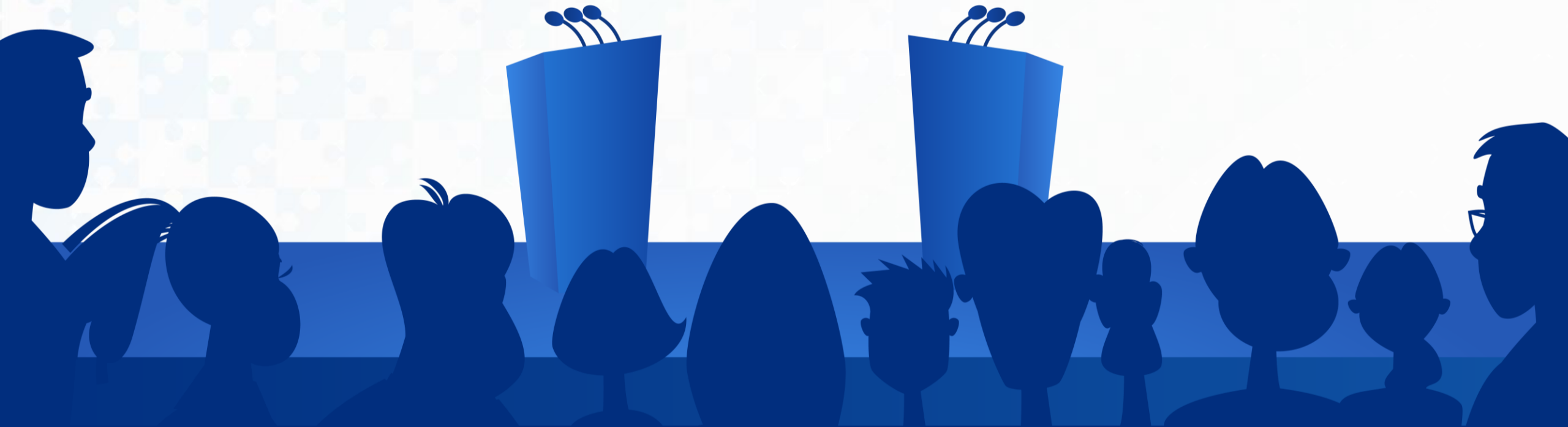
Poll Question: Political Climate

Is the current political climate impacting your ability to teach essential civics concepts or current events?

Yes

or

No



The background is a gradient from blue on the left to red on the right. Three spotlights hang from the top, casting beams of light onto the stage. On the stage, there are two podiums, one blue and one red, each with three microphones. In the foreground, the silhouettes of an audience are visible, looking towards the stage.

How did we get here?

Time & Money

3 cents and the decline of social science instruction

... The percentage of classroom time devoted to social studies is about 7 %. That is at an historic low... Look at the history of decline in social studies in schools across the country you will start noticing the rise of partisanship and the decrease in civic participation. The two are directly correlated.

Justice Sonia Sotomayor

(CNN interview, January 5, 2019)*

* Statistics confirmed via U.S. Department of Education, National Center for Education Statistics, Schools and Staffing Survey (SASS)

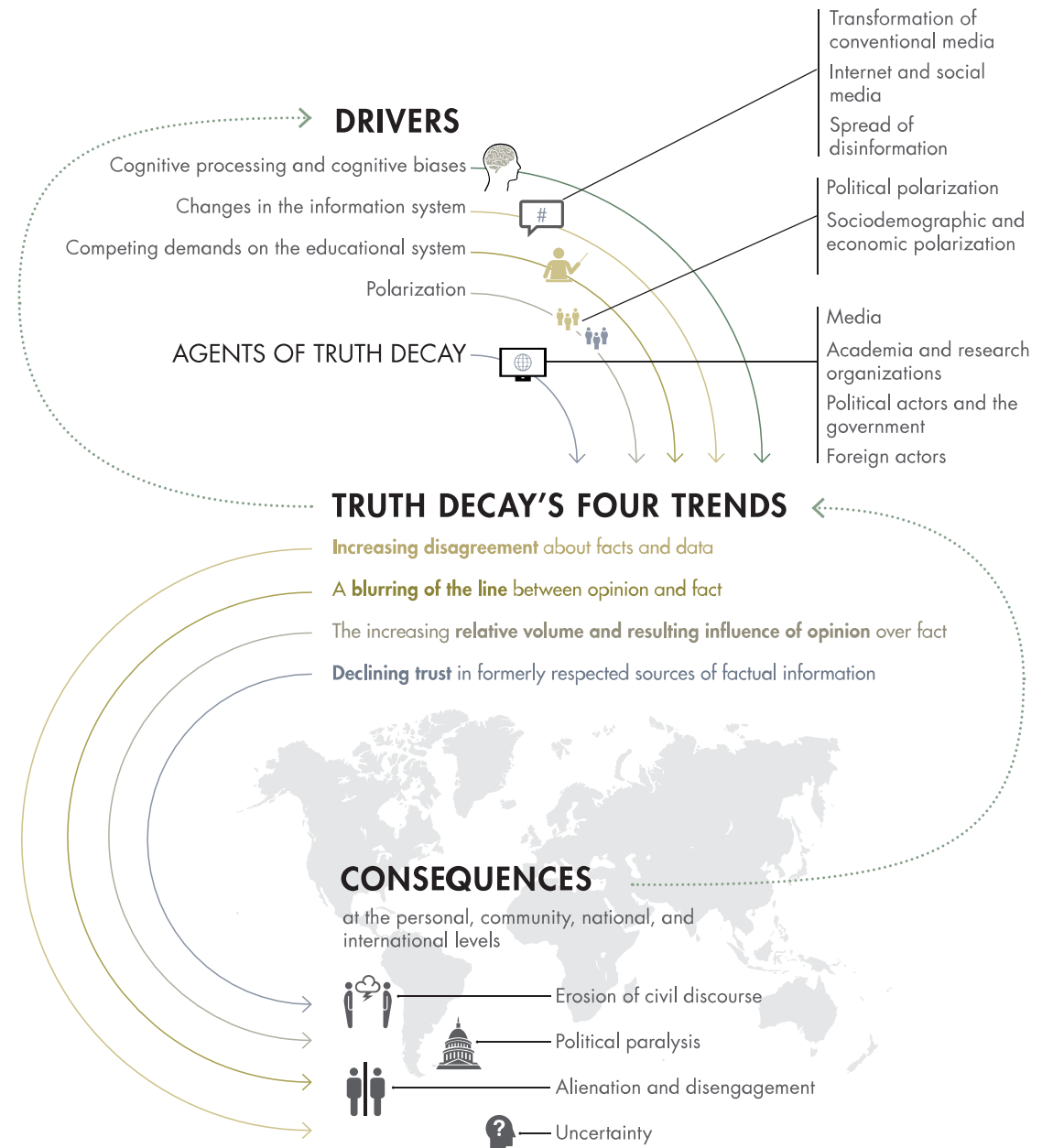


What can help?

Combating Truth Decay

- Fact-based experiences
- Building critical thinking skills
- Building bridges to exploring and understanding different points of view

*Kavanagh, Jennifer and Michael D. Rich, Truth Decay: An Initial Exploration of the Diminishing Role of Facts and Analysis in American Public Life. Santa Monica, CA: RAND Corporation, 2018.

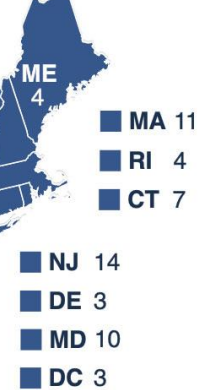


[logout](#)

2012: Barack Obama

2016

2012



- How did the events at the Democratic and Republican National Conventions positively and/or negatively impact each party?
- How did Hurricane Sandy influence the



Credits

© 2012-2020 Second Avenue Software Inc.

Poll Question: Biden's VP Choice

Which candidate do you think Joe Biden will select as his Vice-Presidential running mate?

- a) Kamala Harris
- b) Amy Klobuchar
- c) Elizabeth Warren
- d) Gretchen Whitmer
- e) Tammy Duckworth
- f) Tammy Baldwin
- g) Stacey Abrams





Well-behaved
women seldom
make history

Voices for Suffrage



"I want to speak for myself"



Poll Question: The ERA

The demand for equal rights for women has a long history stretching from 1848 to present.

What action do you think should be taken with regard to the ERA (1972)?

- a) Submit it again for House and Senate Approval and state ratification
- b) Pursue the three-state strategy and challenge in court if necessary
- c) Nothing, women have equal rights



COVID-19



A black and white photograph of a long hospital ward. Rows of metal-framed beds with white linens are arranged on both sides of a central aisle. Several patients are lying in the beds, some looking towards the camera. The ward has large windows on the right side, letting in bright light. The floor is dark and polished. In the background, more beds and a few standing figures are visible, creating a sense of depth.

1918 Epidemic

Interior of a hospital ward at the Base Hospital, Camp Jackson, South Carolina, during the influenza epidemic (1918).

Original image from National Museum of Health and Medicine.

Pandemic 2020



Coronavirus COVID-19 Global Cases by the Center for Systems Science and Engineering (CSSE) at Johns Hopkins University (...)



Total Confirmed

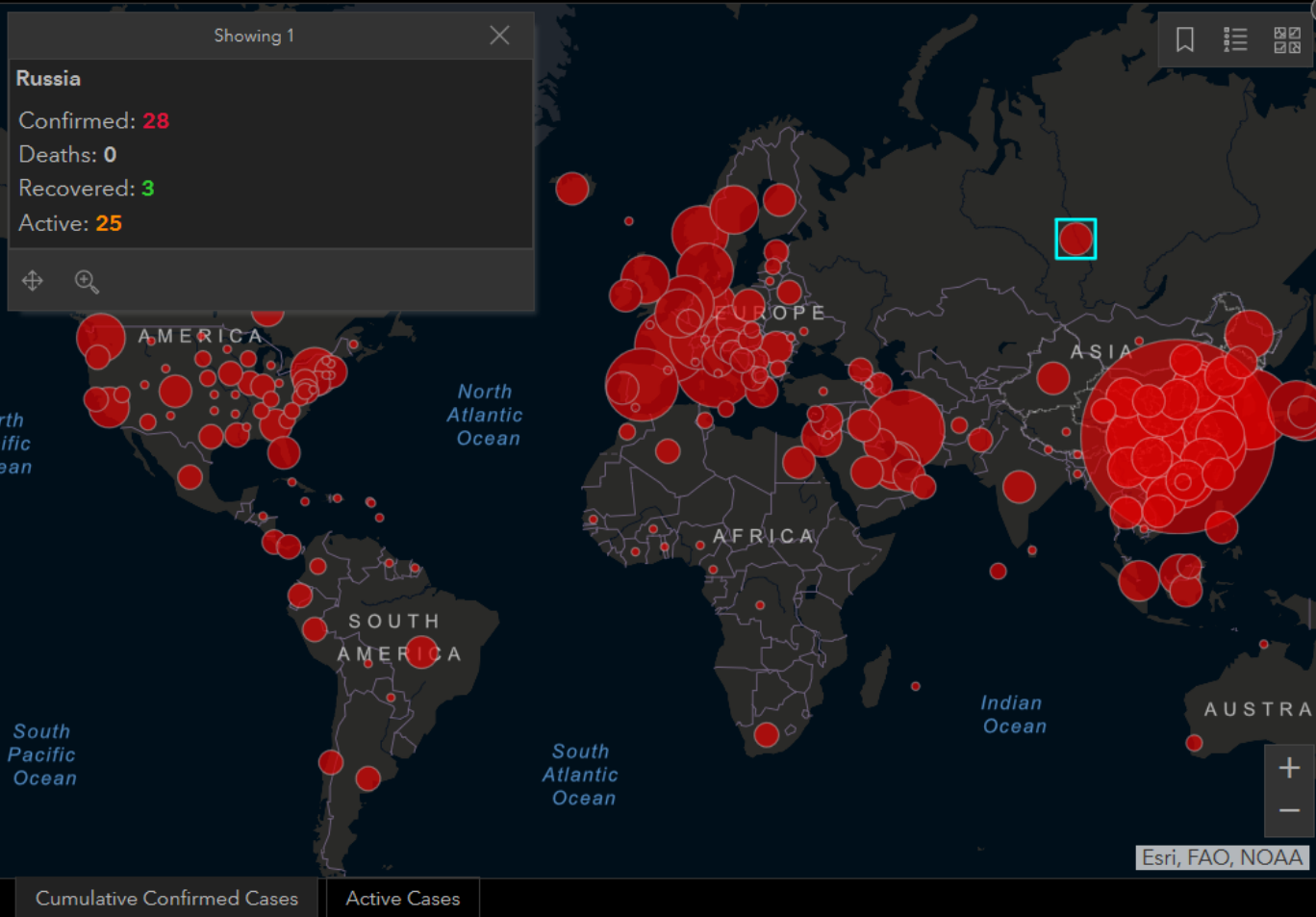
127,749

Confirmed Cases by
Country/Region/Sovereignty

71 Iraq
70 Thailand
69 San Marino
67 Egypt
61 Lebanon
59 Finland
59 Portugal
57 Slovenia
52 Brazil
52 Philippines
49 Romania
49 Taiwan*
47 Poland

Country/Region/Sovereig...

Last Updated at (M/D/YYYY)
3/12/2020, 7:33:04 AM



116
countries/regions

Note: All cases of COVID-19 in repatriated US citizens from the **Diamond Princess** are grouped together, and their location is currently designated at the ship's port location off the coast of Japan. These individuals have been assigned to various quarantine locations (in military bases and hospitals) around

Total Deaths

4,717

3,056 deaths
Hubei China

827 deaths
Italy

429 deaths
Iran

66 deaths
Korea, South

55 deaths
Spain

48 deaths
France France

30 deaths
Washington US

Total Recovered

68,305

1 recovered
Sri Lanka

1 recovered
Sweden

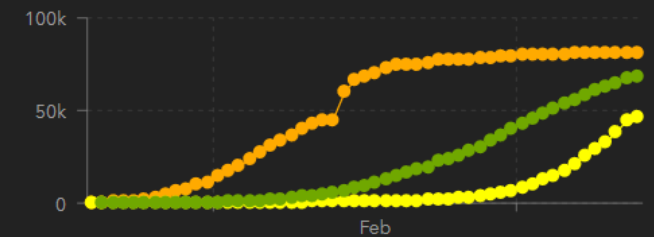
1 recovered
Gibraltar United Kingdom

1 recovered
Arizona US

1 recovered
Massachusetts US

1 recovered
Washington US

1 recovered
Wisconsin US



Actual

Logarithmic

Daily Cases

Pandemic 2020

JOHNS HOPKINS
UNIVERSITY & MEDICINE

CORONAVIRUS
RESOURCE CENTER

Home

Maps & Trends

Testing

News & Information

COVID-19 Basics

Videos & Live Events



World Map



NEW



U.S. Map



Critical Trends



COVID-19 Dashboard by the Center for Systems Science and Engineering (CSSE) at Johns Hopkins University (JHU)



Total Confirmed

3,974,036

Confirmed Cases by
Country/Region/Sovereignty

1,288,569 US
222,857 Spain
217,185 Italy
216,525 United Kingdom
198,676 Russia
176,202 France
170,876 Germany
147,003 Brazil
135,569 Turkey

Admin0 Admin1 Admin2

Last Updated at (M/D/YYYY)

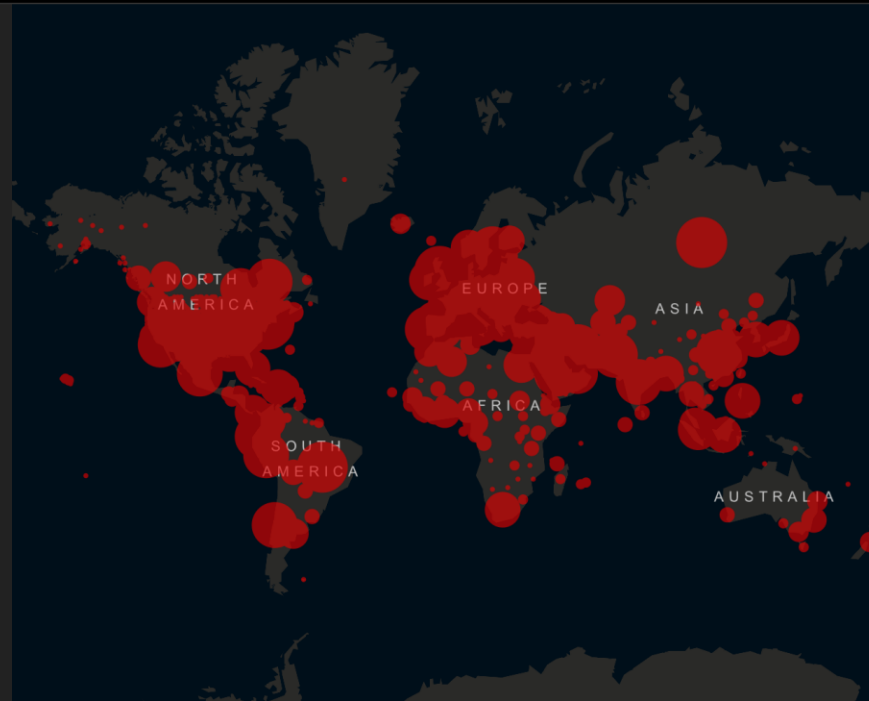
5/9/2020, 11:32:29 AM

187

countries/regions

Lancet Inf Dis Article: [Here](#). Mobile Version: [Here](#).

Lead by [JHU CSSE](#). Automation Support: [Esri Living Atlas team](#) and [JHU APL](#). [Contact US](#). [FAQ](#).



Cumulative Confirmed Cases

Esri, FAO, NOAA

Global Deaths

276,007

77,344 deaths
US

31,662 deaths
United Kingdom

30,201 deaths
Italy

26,299 deaths
Spain

26,233 deaths
France

Global Deaths

US State Level

Deaths, Recovered

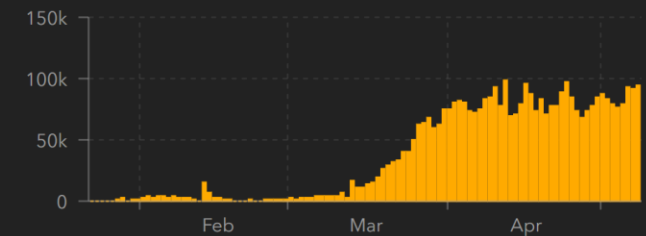
26,243 deaths, 56,378
recovered
New York US

8,960 deaths, 15,642
recovered
New Jersey US

4,702 deaths, recovered
Massachusetts US

4,399 deaths, 15,659
recovered

US Deaths, Recov...

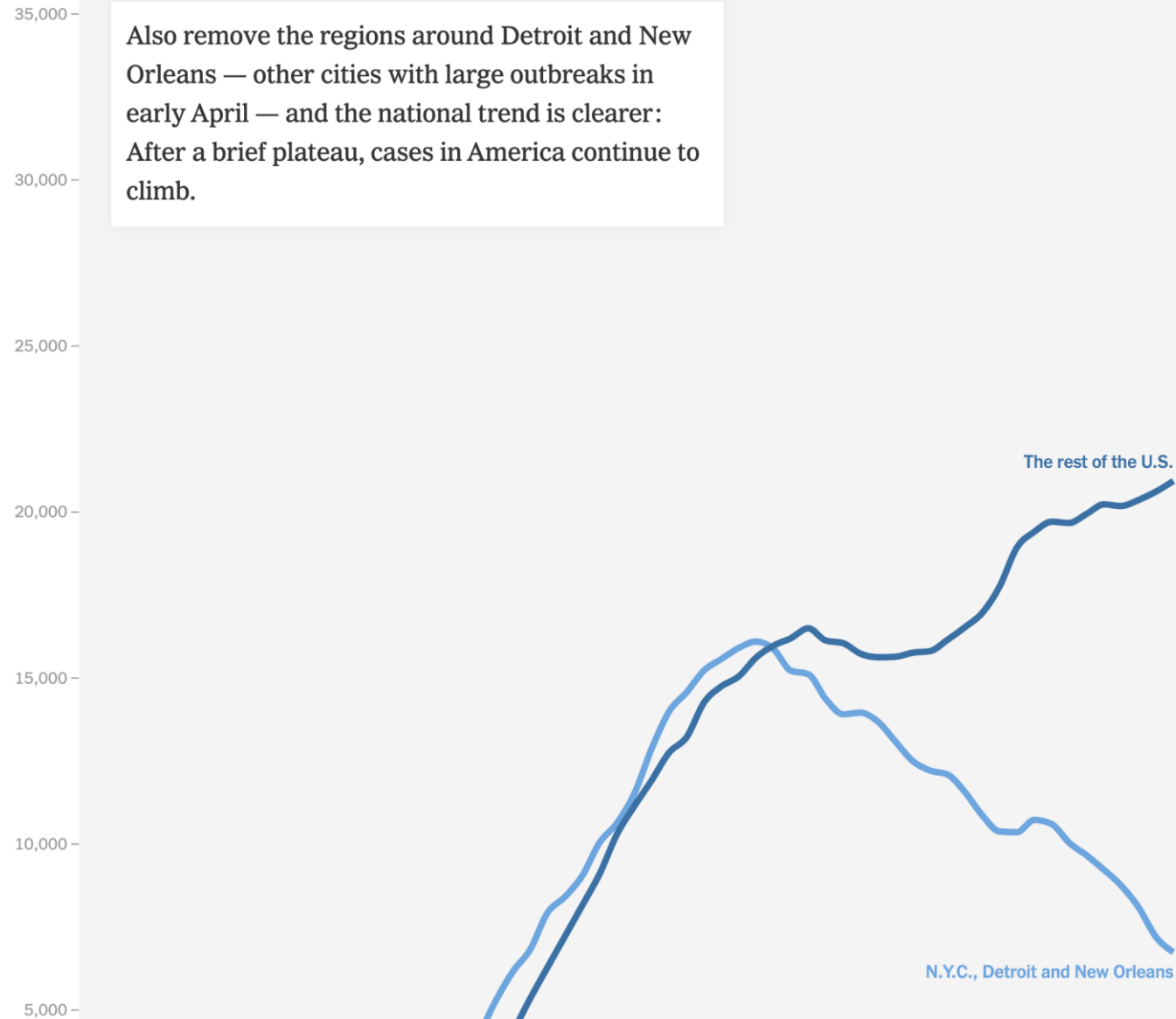


Confirmed

Logarithmic

Daily Cases

Also remove the regions around Detroit and New Orleans — other cities with large outbreaks in early April — and the national trend is clearer: After a brief plateau, cases in America continue to climb.



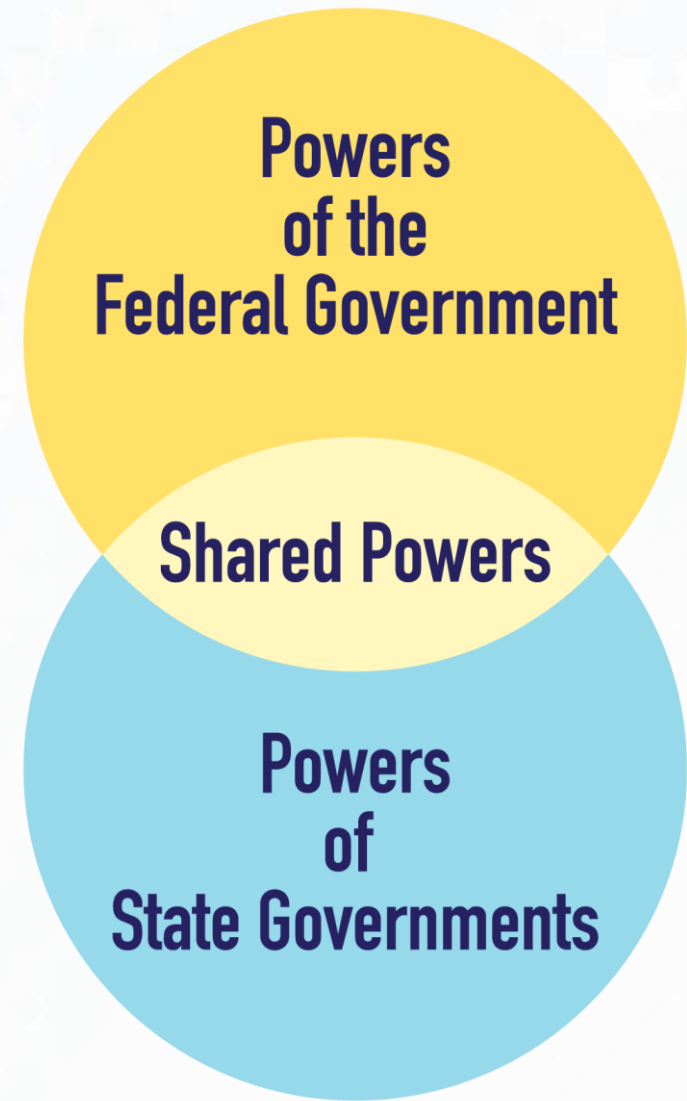
From the New York Times Online:

*Don't Be Fooled by America's
Flattening Curve*
By Nathaniel Lash
MAY 6, 2020

Poll Question: Federalism

As the United States continues to manage the public health response to COVID-19, which level of government do you think should control the process of reopening?

- a) Federal Government
- b) Regional State Coalitions
- c) Individual States
- d) Counties
- e) Cities

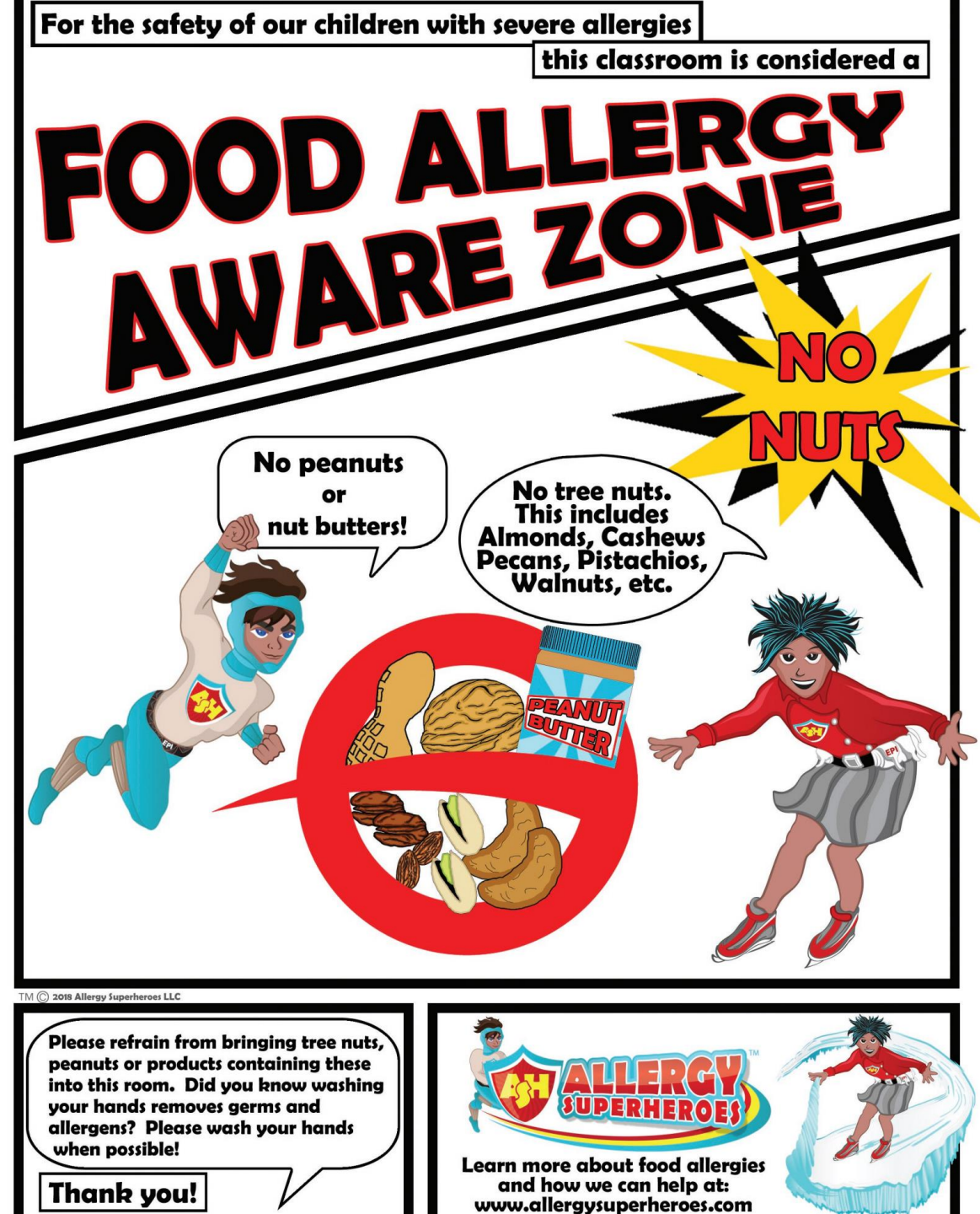


How do we promote civil discourse?

The A.R.E. Method*

- Assertion: *Simple Statement*
- Reasoning: *Because/Why*
- Evidence: *Data*

* Teaching Tolerance, Civil Discourse In The Classroom
(www.tolerance.org) Voting and Voices: Engaging Students and Families in Democracy



Refutation & De-escalation

Four-Step Refutation*

Step 1) Restate: ***“They say”***

Step 2) Refute: ***“But”***

Step 3) Support: ***“Because”***

Step 4) Conclude ***“Therefore . . .”***

* Teaching Tolerance, Civil Discourse In The Classroom
(www.tolerance.org) Voting and Voices: Engaging Students and Families in Democracy



Modeling Discourse

- Avoid the *Either/Or* trap
- Invite people to analyze their argument or data
- Look for common ground
- Offer multiple paths





Q&A



We've registered you for a free account!

Please visit the link below to let us help you roster your classroom or your school.

[ElectionEdge.SecondAvenueLearning.com/free.](https://ElectionEdge.SecondAvenueLearning.com/free)

Sources for Further Exploration

Campbell, Levinson, Hess, Making Civics Count *Citizenship Education for a New Generation* (Routledge, 2012)

iCivics <https://www.icivics.org/>

Kavanagh, Jennifer and Michael D. Rich, Truth Decay: An Initial Exploration of the Diminishing Role of Facts and Analysis in American Public Life. Santa Monica, CA: RAND Corporation, 2018. https://www.rand.org/pubs/research_reports/RR2314.html

Kavanagh, Jennifer, William Marcellino, Jonathan S. Blake, Shawn Smith, Steven Davenport, and Mahlet G. Tebeka, News in a Digital Age: Comparing the Presentation of News Information over Time and Across Media Platforms. Santa Monica, CA: RAND Corporation, 2019. https://www.rand.org/pubs/research_reports/RR2960.html

Kavanagh, Jennifer, William Marcellino, Jonathan S. Blake, Shawn Smith, Steven Davenport, and Mahlet G. Tebeka, News in a Digital Age: Comparing the Presentation of News Information over Time and Across Media Platforms. Santa Monica, CA: RAND Corporation, 2019. https://www.rand.org/pubs/research_reports/RR2960.html.

National Association of Educational Progress. <https://www.nationsreportcard.gov/>

Political Typology Quiz: <https://www.people-press.org/quiz/political-typology/>

Singal, Jessie, “The Theory That Explains the Politicization of Coronavirus” (Intelligencer, May 2020)

Sotomayor, Sonia, <https://matteroffact.tv/justice-sotomayor-lack-of-civics-is-causing-the-partisan-divide/>

Teaching Tolerance, Civil Discourse In The Classroom (www.tolerance.org) Voting and Voices: Engaging Students and Families in Democracy

Wyatt, M., Phillips, H. Voting and Voices: Engaging Students and Families in Democracy, (Teaching Tolerance Webinar)

Thank you!

Victoria VanVoorhis, CEO

Second Avenue Learning

tory@SecondAvenueLearning.com

second avenue

www.SecondAvenueLearning.com